

# STUDIO SPECIFICATIONS

- 50x50 sound stage**
- 16 feet to grid**
- 900 amps AC power**
- 2 wall hard cyclorama**
- Separate infinity black cyclorama**
- 13' loading door with easy street access**
- Scissor lift†**

- Two large dressing rooms with sinks
- Large, complete kitchen
- Lunch/conference room
- Green room/lounge
- Private producer's office with phone
- Fax machine & copier†
- 3/4" & VHS Viewing Stations†
- High-speed Wi-Fi
- Film loading room
- Rest rooms
- Ample free parking

The Studio rental rate includes the Stage Manager and use of the Dressing Rooms, Dark Room, Kitchen, Local Phones, and on-site folding tables.

†additional charges apply

## FACILITY RATES

Rental rates are based upon a 10 hour day, Monday through Friday, 6am to 9pm, with the first meal break off the clock. Overtime rates apply to all other rental times.

Build or Strike Day	\$600
Shoot or Pre-Light Day	\$875
Power 600/900a (shoot/ pre-light)	\$85/130 / day
Overtime	\$150 / hour
Weekend Differential	\$150 / day
Grip	\$200 / day
Electrical Package - 600 amp	\$110 / day
Electrical Package - 900 amp	\$175 / day
Lighting Equipment	billed as used
Expendables	billed as used
Painting (labor & materials)	billed as used

# RENTAL POLICY

Bayshore Studio is a full service production studio and equipment rental facility.

Normal business hours are Monday through Friday 6:00 am to 9:00 pm. The minimum rental period for the studio is one ten-hour day, excluding client's time taken "off the clock" for the first meal break. Overtime rates apply for all time in excess of ten hours and for clients renting from 9:00 pm to 6:00 am. Weekend shoots are at additional cost.

No outside equipment may be brought into Studio without the prior consent of Studio Management.

## TERMS AND CONDITIONS

All first time clients are required to pay on a C.O.D. basis: a fifty percent (50%) deposit is due upon booking Studio with the remaining balance payable upon completion of the rental period.

Afterwards, subject to credit approval and unless otherwise specified, invoices are due and payable fifteen (15) days from the date of issue. Studio reserves the right to change any and all prices without notice and to collect all taxes where required by law.

## INSURANCE

Clients are required to furnish Studio with a Certificate of Insurance listing Bayshore Studio as "additional insured", with respect to General Liability (\$1,000,000), and "loss payee" with respect to Equipment/Facility Loss and Damage (\$500,000). Certificates are due concurrently with the booking of Studio.

## PLACING RENTAL ORDERS

Rental dates may be placed "On Hold" until the Client is prepared to confirm or "Book" the date(s). Holds are taken on a first come, first served basis with the possibility of two or more parties holding the same date respective to when their hold is taken.

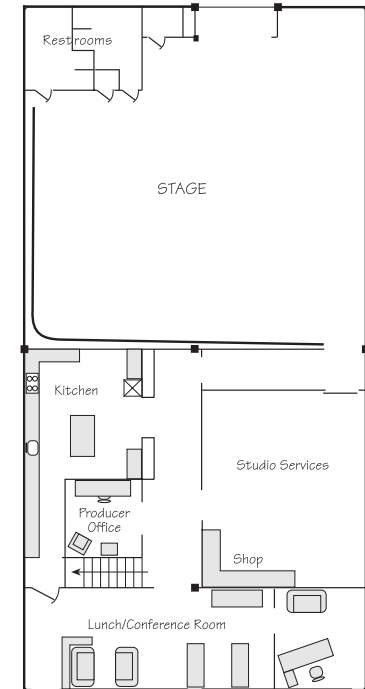
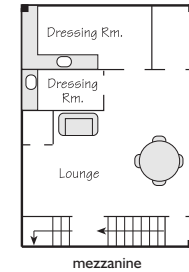
Once a date is booked, Studio will make every possible effort to reschedule any displaced client to a convenient, available date. The cancellation of "Booked" dates may be subject to cancellation charges.

## CLIENT CLEAN-UP RESPONSIBILITIES

The rental customer is responsible for taking all measures necessary to return the rental studio and support areas back to the condition as it was found at the start of the rental. In addition, all props, sets, furniture, and the like must be removed at strike.



## A FULL SERVICE Sound Stage



**2178 Palou Avenue**  
**San Francisco, CA 94124**  
 415.282.7850 fax 282.7858  
[www.bayshorestudio.com](http://www.bayshorestudio.com)

# LIGHTING EQUIPMENT

A full Line of Mole Richardson and Kino Flo lighting equipment is on site and ready to use.  
Please call in advance to place your lighting order.

## Kino Flos

- 2 Image 80 Fixtures
- 8 4' x 4 Tube Fixtures
- 3 4' x 2 Tube Fixtures
- 1 4' x 1 Tube Fixture
- 2 2' x 4 Tube Fixtures
- 1 2' x 2 Tube Fixtures

## Tungsten

- 1 CMC 20K
- 1 Studio 10K
- 2 Baby 10K
- 6 5K Baby Seniors
- 11 2K Juniors
- 4 2K Baby Juniors
- 10 1K Babys
- 6 650 watt Tweenies
- 9 200 watt Midgits
- 1 3-Head 24v. Dedo Kit w/ lenses, Irises
- 4 75watt Source-4 Zoom Leekos
- 2 1K Kleilight Leekos w/ Pattern Holders
- 6 6K Space Lights
- 6 2K Space Lights
- 2 6K Coops
- 5 9-Light FAY
- 10 Single FAY
- 2 Double FAY
- 12 Colortran Far-cyc Cyclites
- 2 4K Supersofts
- 2 2K Supersofts
- 2 4K Zip-softs
- 3 2K Zip-softs
- 3 750 watt Zip-softs
- 1 650 watt Zip-soft
- 6 Mighty Mole 2k Open Face
- 10 Mickey Mole 1K Open Face
- 4 650 watt Mini Mole Open Face
- 3 1K Nook Lights
- 10 Cine Queen PAR Lights

## EXPENDABLES

A full range of production supplies is conveniently located on the stage as needed. Prices available upon request.

# STUDIO GRIP & ELECTRICAL PACKAGES

Bayshore Studio offers clients the following equipment packages at substantial savings over per-item costs.

## GRIP EQUIPMENT: \$200.00 PER DAY

- 40 Sandbags
- 30 C-Stands
- 2 Hi-hi Rolling Stands
- 4 Jr. Combo Stands
- 2 Beefy Baby Stands
- 6 Lowell Stands
- 6 Flex Arms
- 1 6 X 6 Butterfly Set, Complete
- 1 12 X 12 Butterfly Set, Complete
- 10 Sound Blankets
- 15 Full Apple Boxes
- 15 Half Apple Boxes
- 15 Quarter Apple Boxes
- 1 Dot & Finger Set
- 2 EA 9" X 12" Flex Arm Solid, Single, Double, Silk, Lavender
- 2 EA 12" X 18" Flex Arm Solid, Single, Double, Silk, Lavender
- 6 EA 18" X 24" Solid, Single, Double, Silk, Lavender
- 6 EA 2' X 3' Solid, Single, Double, Silk,
- 4 EA 2' X 3' Triple
- 4 EA 3' X 3' Solid, Single, Double, Silk,
- 4 18" X 48" Cutter
- 2 24" X 48" Cutter
- 4 24" X 60" Cutter
- 2 30" X 72" Cutter
- 2 48" X 48" Flag
- 2 48" X 48" Floppy
- 2 48" X 48" Silk
- 2 EA 24" X 36" Cello Cucoloris, Wood Cucoloris
- 2 42" X 42" Cello Cucoloris
- 2 48" X 48" Wood Cucoloris
- 2 40" X 40" Open Frames
- 8 #3 Grip Clips
- 25 #2 Grip Clips
- 8 Baby Nail Plates
- 8 Jr. Nail Plates
- 8 Jr. Pipe Clamps
- 8 Baby Pipe Clamps
- 2 Speedrail cheeseboroughs
- 4 6" C-Clamp w/ Jr. Receiver

- 4 6" C-Clamp w/ Baby Spud
- 4 EA 6", 4", 3" C-Clamps
- 2 Gator Clamps w/ Spud
- 1 Foamcore Holder Plate
- 1 Platypus
- 4 4" Lollipops
- 4 Baby Spuds
- 2 Baby Scissor Clips
- 2 Jr. to Baby Spud Adapters
- 6 Furniture Clamps w/ Spuds
- 6 Mafer Clamps w/ Spuds
- 3 Cardellini Clamps
- 2 Jr. Offset Arms
- 2 Baby Offset Arms
- 1 Box Cribbing
- 1 Box Wedges
- 1 EA 4', 6', 10', 12' Ladder\*

## ELECTRICAL EQUIPMENT:

### 600 amp: \$110.00 PER DAY

- 1 AC Power LF-1200 3 Phase Distribution Spider
- 4 50' 100 A Bates Extensions
- 2 25' 100 A Bates Extensions
- 4 60 A Bates to 3-Duplex Edison
- 3 100 A to Two 60 A Bates Y's
- 15 25' 12/3 Stingers

### 900 amp: \$175.00 PER DAY

All items in 600 amp package plus:

- 1 AC Power 3-Phase 100 Amp Bates Plug-in Distro
- 1 100 A to Two 60 A Bates Y's
- 2 60A to Two 60A Bates Y's
- 3 50' 100 A Bates Extensions

NOTE: All additional Grip and Electrical equipment will be billed as used.  
Price list available upon request.

**B**AYSHORE  
s t u d i o

415.282.7850  
fax 282.7858

2178 Palou Avenue  
San Francisco, CA 94124